

# PROCESSING THE WEGOVY® SAVINGS OFFER

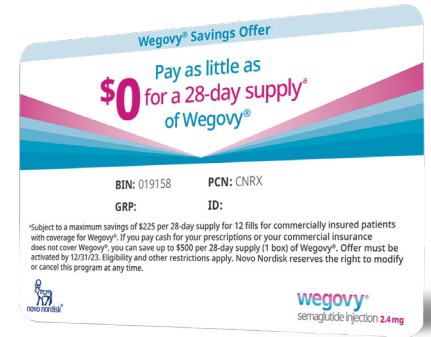
## Patients can get started on Wegovy® for as little as \$0



For the first 12 prescriptions filled, patients may pay as little as \$0 per 28-day supply (1 box) of Wegovy®\*

— Patients can get the digital card at —  
**Wegovy.com**

\*Offer must be activated by 12/31/23. Eligibility and other restrictions apply, see [WegovyTerms.com](http://WegovyTerms.com) for details. Novo Nordisk reserves the right to modify or cancel this program at any time.



### For patients with commercial insurance: First, submit the claim to the patient's primary insurance

#### ✓ If covered

Eligible patients may pay as little as \$0 for up to (12) 28-day fills. Subject to a maximum savings of \$225 per 28-day supply (1 box).

Submit the balance due to SS&C Health as a Secondary Payer as a co-pay only billing using **BIN 019158** and a valid Other Coverage **Code 08**. The patient is responsible initially for the PALA amount and the card pays up to the Savings Benefit. Reimbursement will be received from SS&C Health.

#### ✗ If not covered by plan or PA denied

Patients can save up to \$500 per 28-day supply (1 box).

Submit the balance due to SS&C Health as a Secondary Payer as a co-pay only billing using **BIN 019158** and a valid Other Coverage **Code 03**. The patient pay amount submitted will be reduced by up to the Savings Benefit and reimbursement will be received from SS&C Health.

For information relevant to cash patients, see reverse.

#### Starting dose of Wegovy®



#### First escalation dose of Wegovy®



For information about the Wegovy® dose-escalation schedule, please see the Prescribing Information.

Speak with our Pharmacy Connect team:  
**1-888-870-3739**

#### Indications and Usage

Wegovy® (semaglutide) injection 2.4 mg is indicated as an adjunct to a reduced calorie diet and increased physical activity for chronic weight management in:

- adults with an initial body mass index (BMI) of  $\geq 30$  kg/m<sup>2</sup> (obesity) or  $\geq 27$  kg/m<sup>2</sup> (overweight) in the presence of at least one weight-related comorbid condition (e.g., hypertension, type 2 diabetes mellitus, or dyslipidemia)
- pediatric patients aged 12 years and older with an initial BMI at the 95<sup>th</sup> percentile or greater standardized for age and sex (obesity)

#### Limitations of Use

- Wegovy® contains semaglutide and should not be coadministered with other semaglutide-containing products or with any GLP-1 receptor agonist
- The safety and effectiveness of Wegovy® in combination with other products intended for weight loss, including prescription drugs, over-the-counter drugs, and herbal preparations, have not been established
- Wegovy® has not been studied in patients with a history of pancreatitis

#### Important Safety Information

##### WARNING: RISK OF THYROID C-CELL TUMORS

- In rodents, semaglutide causes dose-dependent and treatment-duration-dependent thyroid C-cell tumors at clinically relevant exposures. It is unknown whether Wegovy® causes thyroid C-cell tumors, including medullary thyroid carcinoma (MTC), in humans as human relevance of semaglutide-induced rodent thyroid C-cell tumors has not been determined
- Wegovy® is contraindicated in patients with a personal or family history of MTC or in patients with Multiple Endocrine Neoplasia syndrome type 2 (MEN 2). Counsel patients regarding the potential risk for MTC with the use of Wegovy® and inform them of symptoms of thyroid tumors (e.g. a mass in the neck, dysphagia, dyspnea, persistent hoarseness). Routine monitoring of serum calcitonin or using thyroid ultrasound is of uncertain value for early detection of MTC in patients treated with Wegovy®

Please see additional Important Safety Information on back.  
Please see accompanying [Prescribing Information](#) including Boxed Warning.

ONCE-WEEKLY  
**wegovy**®  
semaglutide injection 2.4 mg

# PROCESSING THE WEGOVY® SAVINGS OFFER



## For cash-paying patients:

If paying out-of-pocket, patients can save up to \$500 per 28-day supply.

Submit the claim to SS&C Health using **BIN 019158**. A valid Other Coverage **Code 01** is required. The patient pay amount submitted will be reduced by up to the Savings Benefit and reimbursement will be received from SS&C Health.\*

\*Cannot be government beneficiaries.

## For information about processing the Wegovy® Savings Offer

Communicate directly with a dedicated member of our Pharmacy Connect team

Call **1-888-870-3739**

or email

**WPharmacyConnect@connectiverx.com**

Representatives available 24 hours a day, 7 days a week

## Important Safety Information (cont'd)

### Contraindications

Wegovy® is contraindicated in patients with a personal or family history of MTC or in patients with MEN 2, and in patients with a prior serious hypersensitivity reaction to semaglutide or to any of the excipients in Wegovy®. Serious hypersensitivity reactions, including anaphylaxis and angioedema have been reported with Wegovy®

### Warnings and Precautions

- **Risk of Thyroid C-Cell Tumors:** Patients should be further evaluated if serum calcitonin is measured and found to be elevated or thyroid nodules are noted on physical examination or neck imaging
- **Acute Pancreatitis:** Acute pancreatitis, including fatal and non-fatal hemorrhagic or necrotizing pancreatitis, has been observed in patients treated with GLP-1 receptor agonists, including semaglutide. Acute pancreatitis was observed in patients treated with Wegovy® in clinical trials. Observe patients carefully for signs and symptoms of acute pancreatitis (including persistent severe abdominal pain, sometimes radiating to the back, and which may or may not be accompanied by vomiting). If acute pancreatitis is suspected, discontinue Wegovy® promptly, and if acute pancreatitis is confirmed, do not restart
- **Acute Gallbladder Disease:** Treatment with Wegovy® was associated with an increased occurrence of cholelithiasis and cholecystitis. The incidence of cholelithiasis and cholecystitis was higher in Wegovy® pediatric patients aged 12 years and older than in Wegovy® adults. In clinical trials in adult patients, cholelithiasis was reported by 1.6% of Wegovy® patients and 0.7% of placebo patients. Cholecystitis was reported by 0.6% of Wegovy® patients and 0.2% of placebo patients. In a clinical trial in pediatric patients aged 12 years and older, cholelithiasis was reported by 3.8% of Wegovy® patients and 0% placebo patients. Cholecystitis was reported by 0.8% of Wegovy® pediatric patients and 0% placebo patients. Substantial or rapid weight loss can increase the risk of cholelithiasis; however, the incidence of acute gallbladder disease was greater in Wegovy® patients than in placebo patients, even after accounting for the degree of weight loss. If cholelithiasis is suspected, gallbladder studies and appropriate clinical follow-up are indicated
- **Hypoglycemia:** Wegovy® lowers blood glucose and can cause hypoglycemia. In a trial of adult patients with type 2 diabetes, hypoglycemia

was reported in 6.2% of Wegovy® patients versus 2.5% of placebo patients. Patients with type 2 diabetes taking Wegovy® with an insulin secretagogue (e.g. sulfonylurea) or insulin may have an increased risk of hypoglycemia, including severe hypoglycemia. Inform patients of the risk of hypoglycemia and educate them on the signs and symptoms. Monitor blood glucose in patients with type 2 diabetes

- **Acute Kidney Injury:** There have been postmarketing reports of acute kidney injury and worsening of chronic renal failure, which in some cases required hemodialysis, in patients treated with semaglutide. Patients with renal impairment may be at a greater risk of acute kidney injury, but some events have been reported in patients without known underlying renal disease. A majority of the events occurred in patients who experienced nausea, vomiting, or diarrhea, leading to volume depletion. Monitor renal function when initiating or escalating doses of Wegovy® in patients reporting severe adverse gastrointestinal reactions and in patients with renal impairment reporting any adverse reactions that could lead to volume depletion
- **Hypersensitivity Reactions:** Serious hypersensitivity reactions (e.g., anaphylaxis, angioedema) have been reported with Wegovy®. If hypersensitivity reactions occur, discontinue use of Wegovy®, treat promptly per standard of care, and monitor until signs and symptoms resolve. Use caution in a patient with a history of anaphylaxis or angioedema with another GLP-1 receptor agonist
- **Diabetic Retinopathy Complications in Patients with Type 2 Diabetes:** In a trial of adult patients with type 2 diabetes, diabetic retinopathy was reported by 4.0% of Wegovy® patients and 2.7% of placebo patients. Rapid improvement in glucose control has been associated with a temporary worsening of diabetic retinopathy. Patients with a history of diabetic retinopathy should be monitored for progression of diabetic retinopathy
- **Heart Rate Increase:** Mean increases in resting heart rate of 1 to 4 beats per minute (bpm) were observed in Wegovy® adult patients compared to placebo in clinical trials. More Wegovy® adult patients compared with placebo had maximum changes from baseline of 10 to 19 bpm (41% versus 34%) and 20 bpm or more (26% versus 16%). In a clinical trial in pediatric patients

aged 12 years and older with normal baseline heart rate, more patients treated with Wegovy® compared to placebo had maximum changes in heart rate of 20 bpm or more (54% versus 39%). Monitor heart rate at regular intervals and instruct patients to report palpitations or feelings of a racing heartbeat while at rest. If patients experience a sustained increase in resting heart rate, discontinue Wegovy®

- **Suicidal Behavior and Ideation:** Suicidal behavior and ideation have been reported in clinical trials with other weight management products. Monitor patients for depression, suicidal thoughts or behavior, and/or any unusual changes in mood or behavior. Discontinue Wegovy® in patients who experience suicidal thoughts or behaviors and avoid in patients with a history of suicidal attempts or active suicidal ideation

### Adverse Reactions

- Most common adverse reactions (incidence  $\geq 5\%$ ) are: nausea, diarrhea, vomiting, constipation, abdominal pain, headache, fatigue, dyspepsia, dizziness, abdominal distention, eructation, hypoglycemia in patients with type 2 diabetes, flatulence, gastroenteritis, gastroesophageal reflux disease, and nasopharyngitis

### Drug Interactions

- The addition of Wegovy® in patients treated with insulin has not been evaluated. When initiating Wegovy®, consider reducing the dose of concomitantly administered insulin secretagogues (such as sulfonylureas) or insulin to reduce the risk of hypoglycemia
- Wegovy® causes a delay of gastric emptying and has the potential to impact the absorption of concomitantly administered oral medications. Monitor the effects of oral medications concomitantly administered with Wegovy®

### Use in Specific Populations

- **Pregnancy:** May cause fetal harm. When pregnancy is recognized, discontinue Wegovy®. Discontinue Wegovy® in patients at least 2 months before a planned pregnancy
- **Pediatric:** Adverse reactions with Wegovy® in pediatric patients aged 12 years and older were similar to those reported in adults. Pediatric patients  $\geq 12$  years of age treated with Wegovy® had greater incidences of cholelithiasis, cholecystitis, hypotension, rash, and urticaria compared to adults treated with Wegovy®

Please see additional Important Safety Information on front.

Please see accompanying [Prescribing Information](#) including Boxed Warning.



Wegovy® is a registered trademark of Novo Nordisk A/S.  
Novo Nordisk is a registered trademark of Novo Nordisk A/S.  
© 2023 Novo Nordisk All rights reserved.  
US23SEMO00054 February 2023

ONCE-WEEKLY

wegovy®

semaglutide injection 2.4 mg